

Products | Gas Detection Solutions



Precise Measurement Technology for Your Maximum Safety

For decades, SEWERIN has been known for precision and innovation in gas detection technology. Our solutions help network operators, industrial companies and service technicians to detect leaks quickly and reliably – for a safe and efficient gas supply.

Whether in supply networks, the hydrogen industry or bio-gas plants – SEWERIN offers the right measuring device for every application. Our devices use state-of-the-art sensor

technology, including laser, electrochemical and infrared sensors, to ensure maximum measurement accuracy.

This brochure gives you a clear overview of our high-performance products, categorized by application. Find out which instrument best meets your specific requirements – and how SEWERIN technology can help you save time, reduce costs and ensure safety.



Personal Protection and Safety for Emergency Response Technicians

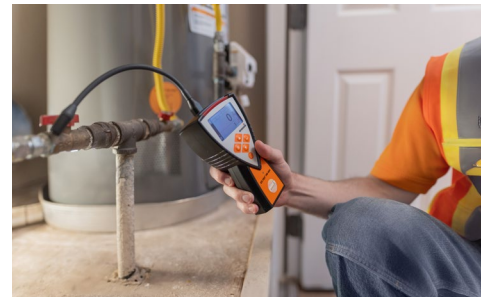
EX-TEC® PM 580 | 550 | 500 | 400

Your CGI Device for Any Gas Leak Detection Challenge

Reliable gas detection, measurement, and safety testing for all applications.



- + Gas warning, detection, and measurement in one device (**EX-TEC® PM 580**)
- + Simultaneous CGI measurement and leak detection (**EX-TEC® PM 580**)
- + Quick and precise leak localization
- + Automatic measurement recording plus test report storage
- + Safety calibration to nonane plus calibration to JetFuel (**EX-TEC® PM 400**)
- + Intuitive menu and sunlight-readable display
- + Usable with gloves – ideal for cold environments
- + Impact-resistant and built for tough conditions
- + UL/CSA approved



Pipeline Inspection and Network Survey

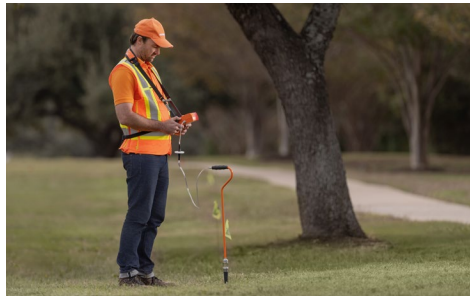
EX-TEC® HS 680 / 660 / 650 / 610

Gas Leak Detection with Integrated Ethane Gas Analyzer for All Applications

Detect and pinpoint gas leaks in pipelines ensuring fast and precise results.



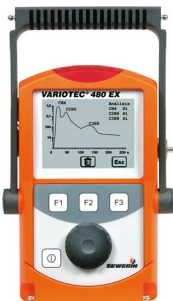
- + Multi-purpose gas detector for professionals
- + Ethane Gas Analyzer distinguishes natural gas from digester gas (e. g. marsh, soil, landfill, and sewer gas)
- + Highly sensitive sensors for rapid detection
- + Dual infrared CH₄/CO₂ measurement for accurate leak grading
- + Optional sensors for O₂, CO and H₂S in confined spaces
- + Compatible with **SeCuRi® SAT** documentation software



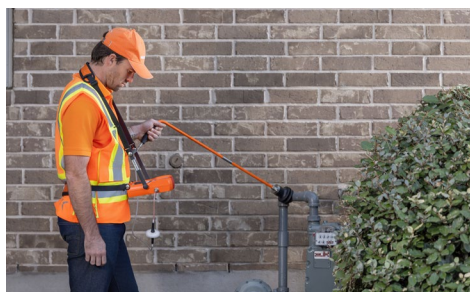
VARIOTEC® 480 EX / 460 EX / 450 EX / 400 EX

Cost-effective Gas Network Inspections

Detect methane and other gases with high precision – includes an integrated ethane analyzer.



- + Catalytic and thermal conductivity sensors for reliable detection
- + Highly sensitive sensors detect ppm-level gas leaks
- + Optional sensors for O₂ and CO
- + Low acquisition and maintenance costs
- + Ethane gas analyzer differentiates gas sources
- + Compatible with **SeCuRi® SAT** documentation software



LaserGasPatroller LGP 800

Vehicle based Network Survey

Vehicle-mounted system for the efficient detection, assessment and mapping of gas leaks along underground pipelines.



- + TDLS technology for selective methane measurement
- + Automated control via **SeCuRi® SAT** software
- + Modular design for quick and easy maintenance
- + Compact, space-saving construction
- + Automatic self-test ensures error-free operation
- + Compatible with **SeCuRi® SAT** documentation software



SR-LD 800 / 200

Remote Laser Detection for Short and Long Distances

Decide effortless whether there is a leak or not.



- + Detects methane leaks up to 650 ft. (**SR-LD 800**) or 390 ft. (**SR-LD 200**)
- + Up to 13 hours of operation for uninterrupted use
- + High accuracy by integrated self calibration
- + Continuous zero-point updates for reliable detection
- + Distance measurement between detector and reflective surface
- + Red dot sight for easy aiming at the target
- + Lightweight and handy



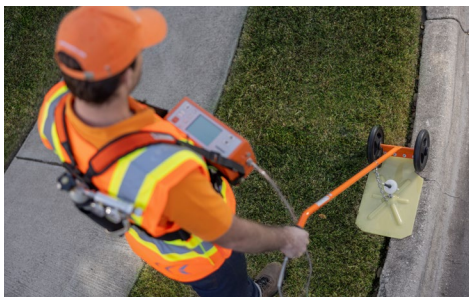
PORTAFID® M3-K

Flame Ionization Detector for Natural Gas Leak Surveys

Maximum efficiency by zero false readings.



- + Automatic ignition with manual reignition option
- + Zero-point calibration for precise measurements
- + No cross-sensitivity to moisture
- + Detects only hydrocarbons
- + Linear measurement ensures accuracy and consistency
- + Long-lasting rechargeable batteries
- + Compatible with **SeCuRi® SAT** documentation software
- + Comfortable to carry



Instruments for Specialized Applications

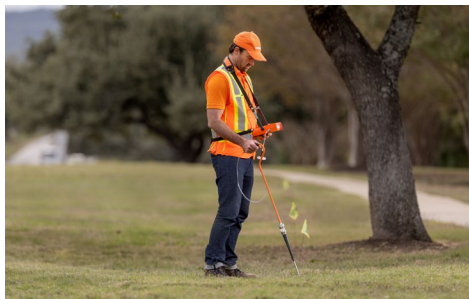
VARIOTEC® EGA

Ethane Gas Analyzer for Gas Composition Analysis

Avoid excavation errors due to false readings.



- + Differentiates natural gas from digester gas
- + Precisely measures CH_4 , C_2H_6 , C_3H_8 for environmental and industrial applications
- + Simple operation with clear user guidance
- + Fast on-site ethane analysis without lab testing (get results within just 4 minutes)
- + Saves time and costs by eliminating sample transport
- + Measurement reports can be stored on a PC



SNOOPER mini

Compact Gas Detector for Quick Leak Detection

Easy and simple handling for any operator.



- + Detects leaks from 0 - 22,000 ppm
- + Super-fast diffusion sensor
- + Specialized models for methane, propane, or hydrogen
- + Audible and numerical warnings based on gas concentration
- + Replaceable sensor filter for extended lifespan
- + Fast startup for immediate leak detection
- + Bright, backlit LCD for easy reading
- + High performance at an affordable price



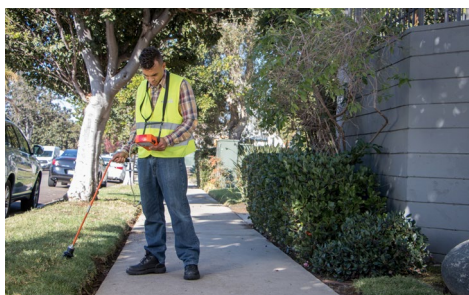
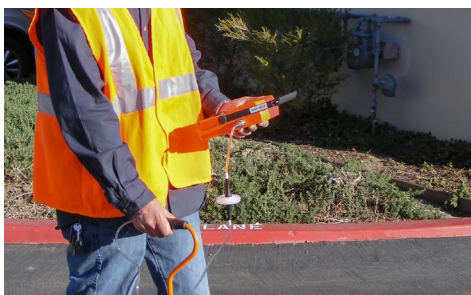
VARIOTEC® 460 Tracergas

The Hydrogen Specialist for Leak Detection and Measuring

The ideal device for detecting the smallest traces of gas after an unstable pressure test.



- + Rapid surface leak detection via hydrogen tracing
- + Pinpoints leaks in boreholes with precision
- + Minimal cross-sensitivity to moisture and methane
- + Digital display for clear and accurate results
- + Outstanding sensitivity from 0.1 ppm - 100 vol. %



Test Sets and Test Gases

Calibration Equipment

Lightweight, portable, and perfect for daily service operations.



ATS 503/501

More than a bump test: bump test, calibration and adjustment

- + Automated, time-controlled or manual testing and adjustment for **EX-TEC® PM 580, 550, 500** and **400**.
- + Three operating modes: manual, automatic, timer
- + Multiple test gas connections (three for **ATS 503**, one for **ATS 501**)
- + Automatic adjustment if test is not passed
- + Logged function tests
- + Simple configuration via GasCom software
- + Flexible installation: upright or wall-mounted



SPE Test Sets

Flexible Solutions for Testing and Adjustment

- + From simple field tests to multigas applications - customized solutions for precise display tests and adjustments.
- + Versatile use for different gas types
- + Simple operation for individual tests and adjustments
- + Pressure and flow control
- + Fresh air inlet
- + Pressure gauge for calibration gas can
- + Flexible gas cans or high pressure gas cylinders



Test gases

Long-term Stable Calibration Gas for Precise Measurement Results

- + High-quality test gases with a shelf life of up to 36 months for reliable calibrations and display tests.
- + Long-lasting composition for precise measurements
- + Ideal for individual calibration and adjustments
- + High stability for consistent quality

Professional Probes



Flexible Probe HG5

One-handed leak detection with flexible gooseneck (length 35 inch)



Bell Probe D80

Leak detection on unpaved surfaces



Flexible/Telescopic Hand Probe

Flexible leak detection for two-handed operation (length 14 inch, resp. 17 – 36 inch)



Telescopic Bell Probe D80

Leak detection on unpaved surfaces (extends up to 3 ft)



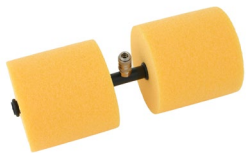
Hand Probe

Compact and easy to use



SeGas GRP Probe

Leak detection on hard-to-reach exposed pipelines (extends up to 13 ft)



Floating Probe

For monitoring shafts or cavities



Carpet Probe PRO

Leak detection on paved surfaces

100% coverage of the pipeline corridor

Hardly any cross-sensitivity due to environmental influences



Localization Probe D80

No secondary air intake due to rubber cone
Reproducible measurements

Gas Types

	CH ₄	C ₃ H ₈	C ₄ H ₁₀	C ₉ H ₂₀	C ₂ H ₂	JFuel	H ₂	H ₂ S	CO	O ₂	CO ₂	Ethane Detector
EX-TEC® PM 580	✓	✓						✓	✓	✓	✓	
EX-TEC® PM 550	✓	✓						✓	✓	✓	✓	
EX-TEC® PM 500	✓	✓						✓	✓	✓	✓	
EX-TEC® PM 400	✓	✓		✓	✓	✓	✓		✓	✓	✓	
EX-TEC® HS 680	✓	✓	✓					✓	✓	✓	✓	✓
EX-TEC® HS 660	✓	✓							✓	✓	✓	✓
EX-TEC® HS 650	✓	✓	✓					✓	✓	✓	✓	
EX-TEC® HS 610	✓	✓								✓	✓	
SNOOPER mini	✓	✓					✓					
VARIOTEC® 480 EX	✓	✓	✓						✓	✓		✓
VARIOTEC® 460 EX	✓	✓							✓	✓		✓
VARIOTEC® 450 EX	✓	✓	✓						✓	✓		
VARIOTEC® 400 EX	✓	✓										
VARIOTEC® 460 Tracergas							✓					
VARIOTEC® EGA	✓	✓										✓
PORTAFID® M3-K	✓											
SR-LD 800/200	✓											

Probes

	Flexible Probe HG5	Flexible Hand Probe	Hand Probe	Floating Probe	Localisation Probe PRO	Telescopic/Bell Probe D80	SeGas GRP Probe	Carpet Probe PRO	Telescopic Hand Probe
EX-TEC® PM 580	✓	✓	✓	✓					✓
EX-TEC® PM 550	✓	✓	✓	✓					
EX-TEC® PM 500	✓	✓	✓	✓					
EX-TEC® PM 400	✓	✓	✓	✓					
EX-TEC® HS 680		✓	✓	✓	✓	✓	✓	✓	✓
EX-TEC® HS 660		✓	✓	✓	✓	✓	✓	✓	✓
EX-TEC® HS 650		✓	✓	✓	✓				
EX-TEC® HS 610		✓	✓	✓	✓				
VARIOTEC® 480 EX		✓	✓	✓	✓	✓	✓	✓	✓
VARIOTEC® 460 EX		✓	✓	✓	✓	✓	✓	✓	✓
VARIOTEC® 450 EX		✓	✓	✓	✓				
VARIOTEC® 400 EX		✓	✓	✓		✓	✓	✓	✓
VARIOTEC® 460 Tracergas		✓	✓		✓	✓		✓	✓
VARIOTEC® EGA		✓	✓		✓				✓
PORTAFID® M3-K		✓	✓			✓		✓	

SEWERIN in the USA

Find your local dealer –
scan QR code or visit our website



Lutz Hörnschemeyer
US Sales Manager

Hermann Sewerin GmbH

Phone +1 888 592 9916

Cell +1 888 592 9916 ext. 103

sewerin-usa@sewerin.net

lutz.hoernschemeyer@sewerin.com

www.sewerin.com

www.sewerin.us