

## **Products** | Water Leak Detection Solutions





# Effective Leak Detection for a Sustainable Water Supply and an Efficient Utility Management

Leaks in water networks can lead to high costs and loss of resources. SEWERIN offers modern solutions for precise water leak detection – from acoustic methods to tracer gas technologies. Our systems are designed to efficiently reduce water losses and ensure a reliable supply.

Whether for supply networks, building installations or network monitoring – SEWERIN has the right technology for every application. This brochure provides you with an overview of our high-performance products, clearly organized by application area. Find out which system best fulfils your requirements.





# Acoustic Leak Detection

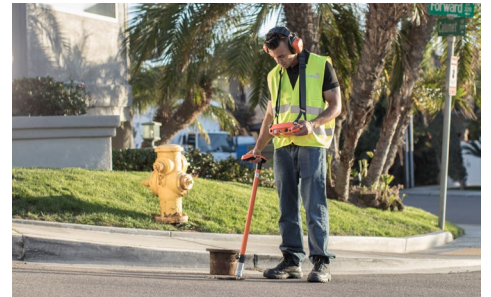
## **AQUAPHON® system with A 200 receiver**

### **Professional Solution for Advanced Applications**

State-of-the-art technology for precise and fast leak detection.



- + Fast detection with intelligent filters
- + Wireless operation with radio connected headphones and microphones
- + Leak positioning with GNSS
- + On-site leak noise comparison
- + Automatic hearing protection against sudden loud noises
- + Intuitive user guidance
- + Documentation with **WaterCom** software



## **AQUAPHON® system with A 150 receiver**

### **Compact and Precise Acoustic Leak Detection**

The **AQUAPHON® A 150** is a versatile device for precise leak detection. Equipped with highly sensitive microphones and intelligent filters for optimum noise detection, it is perfect for leaks in mains and service lines.



- + High-quality piezo microphones
- + Automatic frequency scan
- + Long-lasting rechargeable batteries (up to 50 hours)
- + Ultralight and ergonomic design
- + Wireless headphones minimize interference



## **AQUAPHON® system with A 50 receiver**

### **The Entry-level System for Acoustic Leak Detection**

Lightweight and easy to operate, ideal for initial leak detection in the field with wireless technology for interference-free measurements.



- + Long-lasting rechargeable batteries (up to 50 hours)
- + Wireless headphones minimize interference
- + Adjustable frequency ranges
- + Ultralight and portable backpack solution





## AquaTest T10

### Robust Test Rod for Fast On-site Leak Detection

The **AquaTest T10** is ideal for initial preliminary investigations in the field. Wireless design and highly sensitive microphone technology enable precise acoustic leak detection.



- + Wireless ground mic test rod combo
- + Superior noise quality
- + Visual noise display
- + No disruptive headphone noises
- + 8 preset filter levels
- + Available with or without SDR (Sewer Digital Radio) module





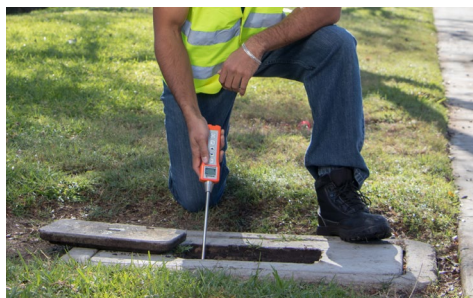
## Stethophon® 04

### Compact Electronic Listening Device device for Indoor and Outdoor Prechecks

The **Stethophon® 04** is a handy device for prelocation and pinpoint leak detection, e. g. at meter boxes or for valve checking. Wireless signal transmission and adjustable filters ensure reliable results.



- + Wireless headphones with digital transmission
- + Connects to external ground microphone
- + 8 preset filter levels
- + Hearing protection function
- + Numeric noise level display





# Correlators

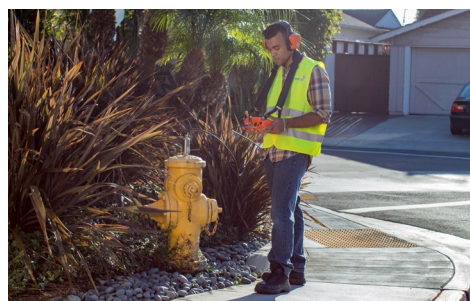
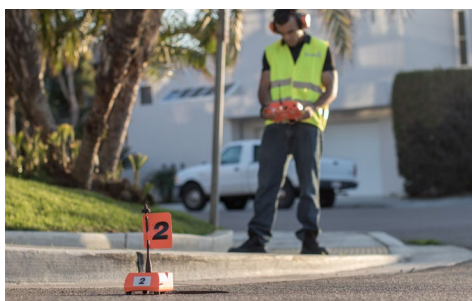
## SeCorr® C 200

### High-performance correlator for metallic and non-metallic pipes

The **SeCorr® C 200** is a powerful correlator for fast and precise leak detection over long distances – optimized for all pipe materials and diameters.



- + Portable, high-performance design
- + Works with various pipe materials and sizes
- + High-performance microphones and hydrophones
- + Automated filter optimization
- + Suppresses interference
- + Indicates the accuracy of the correlation
- + Sound velocity measurement
- + User-friendly touchscreen operation
- + Documentation with **WaterCom** software





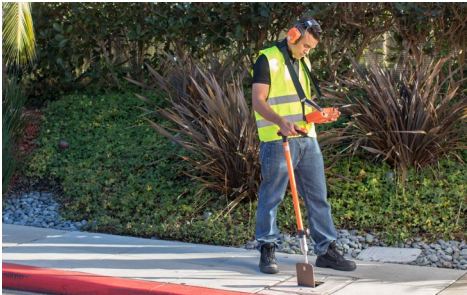
## SeCorrPhon AC 200

### Combination device for pre-location, localization and correlation

The **SeCorrPhon AC 200** combines three functions in one device: pre-location, pinpoint location and correlation for precise leak detection on buried pipes.



- + Three-in-one leak detection
- + High-quality sound filtering
- + GNSS positioning
- + Fast, accurate leak detection
- + On-site audio comparison
- + Intuitive user interface
- + Automated filter optimization
- + Indicates the accuracy of the correlation
- + Interference suppression
- + Sound velocity measurement
- + Documentation with **WaterCom** software





# Network Monitoring

## **SePem® 155 with SePem® 01 Master**

### Radio Noise Logger for Early Leakage Detection

The **SePem® 155** is a highly sensitive wireless logger for permanent monitoring of water pipe networks. It detects leaks at an early stage, even if they do not come to the surface. Thanks to its compact design, it can be flexibly positioned in valve boxes, manhole covers or other access points. With the portable **SePem® 01 Master**, up to 500 loggers can be managed and read out – efficiently, precisely and without the need for additional personnel outside regular working hours.



- + Battery life time of up to 5 years
- + Lift & Shift as well as permanent application
- + Highly sensitive microphones and hydrophones
- + Simple leak noise indicator
- + Covers up to 1,600 feet
- + Adaptable to different network types





# Leak Detection with Tracer Gas

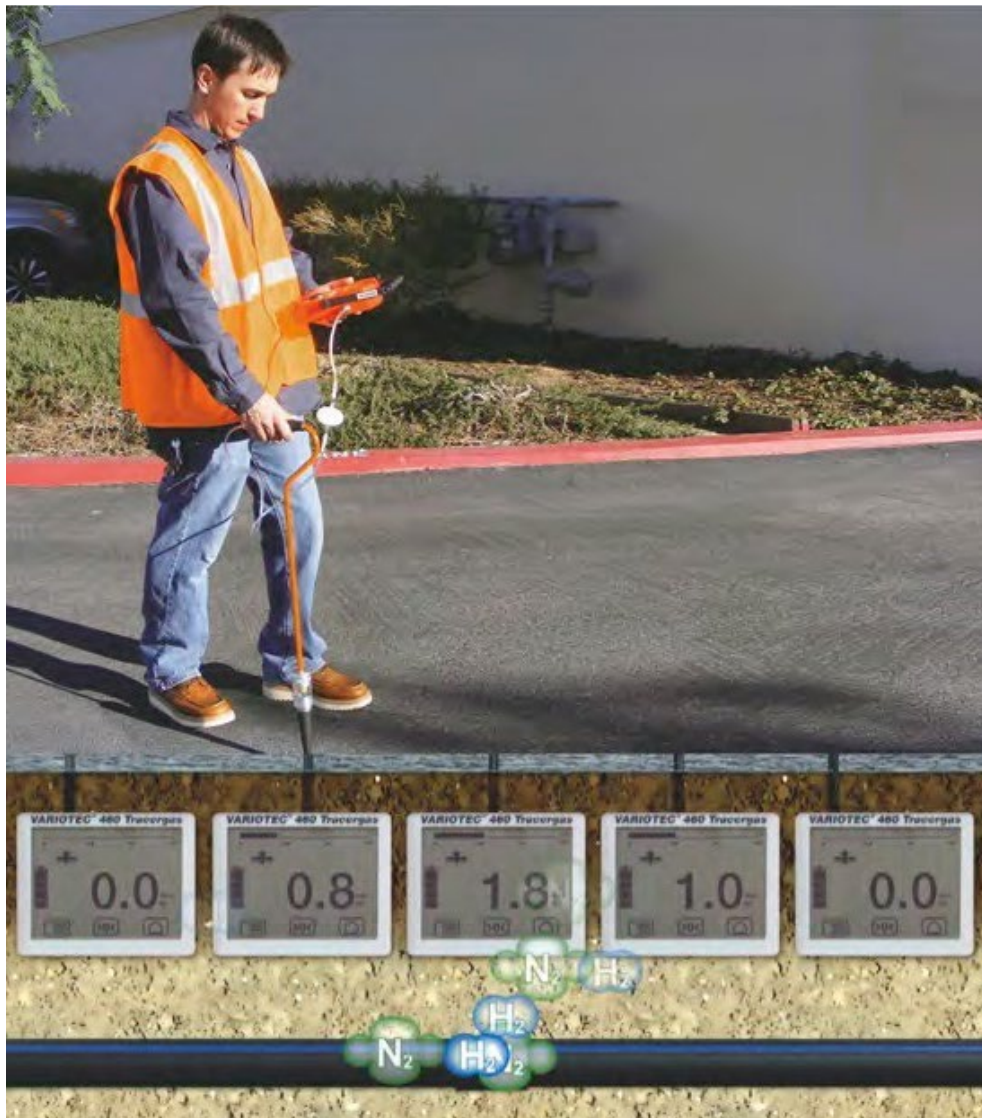
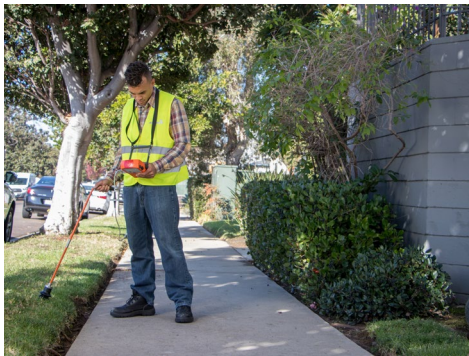
## VARIOTEC® 460 Tracergas

### For Challenging Leak Detection Tasks

The **VARIOTEC® 460 Tracergas** is a specialist in detecting leaks using hydrogen as a tracer gas. Its innovative sensor technology ensures precise and efficient results. Suitable for leak detection when no noise or pressure is present, e. g. at long service lines, low pressure lines, supply lines for swimming pools or irrigation systems.



- + Fast hydrogen-based surface leak detection
- + Pinpoint leaks in boreholes
- + Digital display for clear results
- + High sensitivity down to 0.1 ppm





# Microphones

	<b>Stethophon 04</b>	<b>AQUAPHON® A 50</b>	<b>AQUAPHON® A 150</b>	<b>AQUAPHON® A 200</b>	<b>SeCorr® C 200</b>	<b>SeCorrPhon AC 200</b>
	BM 200		✓	✓		✓
	BM 230		✓	✓		✓
	UM 50, 4.26 ft.	✓				
	UM 200, 4.26 ft.		✓	✓	✓	✓
	UM 200, 9.18 ft./ 19.68 ft.				✓	✓
	EM 35	✓				
	TM 200		✓	✓		✓



## SEWERIN in the USA

Find your local dealer –  
scan QR code or visit our website



**Lutz Hörnschemeyer**  
US Sales Manager

Hermann Sewerin GmbH

Phone +1 888 592 9916

Cell +1 888 592 9916 ext. 103

[sewerin-usa@sewerin.net](mailto:sewerin-usa@sewerin.net)

[lutz.hoernschemeyer@sewerin.com](mailto:lutz.hoernschemeyer@sewerin.com)

[www.sewerin.com](http://www.sewerin.com)

[www.sewerin.us](http://www.sewerin.us)